

BERMUDA

**MARINE BOARD (CONTROL OVER MARITIME TRAFFIC)
(BERMUDA SAIL GRAND PRIX RACE COURSE RESTRICTIONS) NOTICE 2022**

BR / 2022

TABLE OF CONTENTS

1	Citation
2	Interpretation
3	Bermuda Sail Grand Prix races
4	Protection of race yachts
5	Closure of exclusion zone
6	Display of flag
7	Caution to be exercised by mariners in and around exclusion zone
8	Patrol of marine traffic
9	Offence
10	Exemptions for certain boats
	SCHEDULE
	Plan of race course area

The Minister responsible for marine and ports services, in exercise of the power conferred by section 10(1)(a), (aa) and (b) of the Marine Board Act 1962 issues the following Notice:

Citation

1 This Notice may be cited as the Marine Board (Control Over Maritime Traffic) (Bermuda Sail Grand Prix Race Course Restrictions) Notice 2022.

Interpretation

2 In this Notice—

“Bermuda Sail Grand Prix” means F50 League (Bermuda) Ltd, a company incorporated in Bermuda;

“Bermuda Sail Grand Prix flag” means one of the official flags distributed by Bermuda Sail Grand Prix authorising a boat to access a specified part of the exclusion zone;

“Bermuda Sail Grand Prix race yachts” means the yachts competing in any of the Bermuda Sail Grand Prix races;

MARINE BOARD (CONTROL OVER MARITIME TRAFFIC) (BERMUDA SAIL GRAND PRIX RACE COURSE RESTRICTIONS) NOTICE 2022

- “boat” includes ship and personal watercraft (jet-ski);
- “boundary markers” means buoys with distinctive Bermuda Sail Grand Prix identification marking the boundary of the exclusion zone;
- “exclusion zone” means the area around the race course within the boundary markers;
- “marshal boat” means a boat operated by Bermuda Sail Grand Prix staff or volunteers to establish and patrol the exclusion zone;
- “race course area” means the area of the Great Sound shown in blue shading and edged in blue dashes on the plan in the Schedule;
- “race course”, in relation to a race day, means such part of the race course area within the exclusion zone as is identified by Bermuda Sail Grand Prix as the race course for that day;
- “race day” means each day from Thursday 12 May 2022 to Sunday 15 May 2022;
- “race times” means the period from 12 noon to 5:00pm on each race day.

Bermuda Sail Grand Prix races

3 The Bermuda Sail Grand Prix races and practice races will take place within the race course area on each race day during the race times.

Protection of race yachts

4 No person shall approach within 60 metres of any of the Bermuda Sail Grand Prix race yachts at any time while in the race course area.

Closure of exclusion zone

5 The exclusion zone around the race course for each race day will be closed to all marine traffic during the race times.

Display of flag

6 All mariners, pilots and boatmen within the exclusion zone during the race times must—

- (a) display prominently on their boat a Bermuda Sail Grand Prix flag; and
- (b) remain within the designated part of the exclusion zone authorised by Bermuda Sail Grand Prix by the display of that flag.

Caution to be exercised by mariners in and around exclusion zone

7 (1) All mariners, pilots and boatmen within the exclusion zone during the race times must—

- (a) keep clear of the race course; and
- (b) exercise extreme caution at all times, in particular if approaching the boundary of the race course.

MARINE BOARD (CONTROL OVER MARITIME TRAFFIC) (BERMUDA SAIL GRAND PRIX RACE COURSE RESTRICTIONS) NOTICE 2022

(2) A five-knot no wake restriction shall apply to all boats in the area extending 100 metres outside the exclusion zone during the race times.

Patrol of marine traffic

8 For the purpose of enforcement of this Notice, the coast guard unit and marshal boats will patrol the exclusion zone and the area extending 100 metres outside the exclusion zone.

Offence

9 It is an offence under section 10(3)(a) of the Marine Board Act 1962 for the master of a ship or boat to fail to observe the requirements of this Notice, punishable on summary conviction in accordance with section 112 of that Act.

Exemptions for certain boats

10 (1) Paragraphs 4 to 7 do not apply to—

- (a) the Bermuda Sail Grand Prix race yachts while participating in the Bermuda Sail Grand Prix races and practice races;
- (b) the coast guard unit and marshal boats;
- (c) the Regatta Officials.

(2) Paragraphs 5 and 6 do not apply to boats providing scheduled ferry services under Part VI of the Marine Board Act 1962.

(3) Paragraphs 4 and 5 do not apply to boats authorised by Bermuda Sail Grand Prix to be within the exclusion zone by the display of a Bermuda Sail Grand Prix flag.

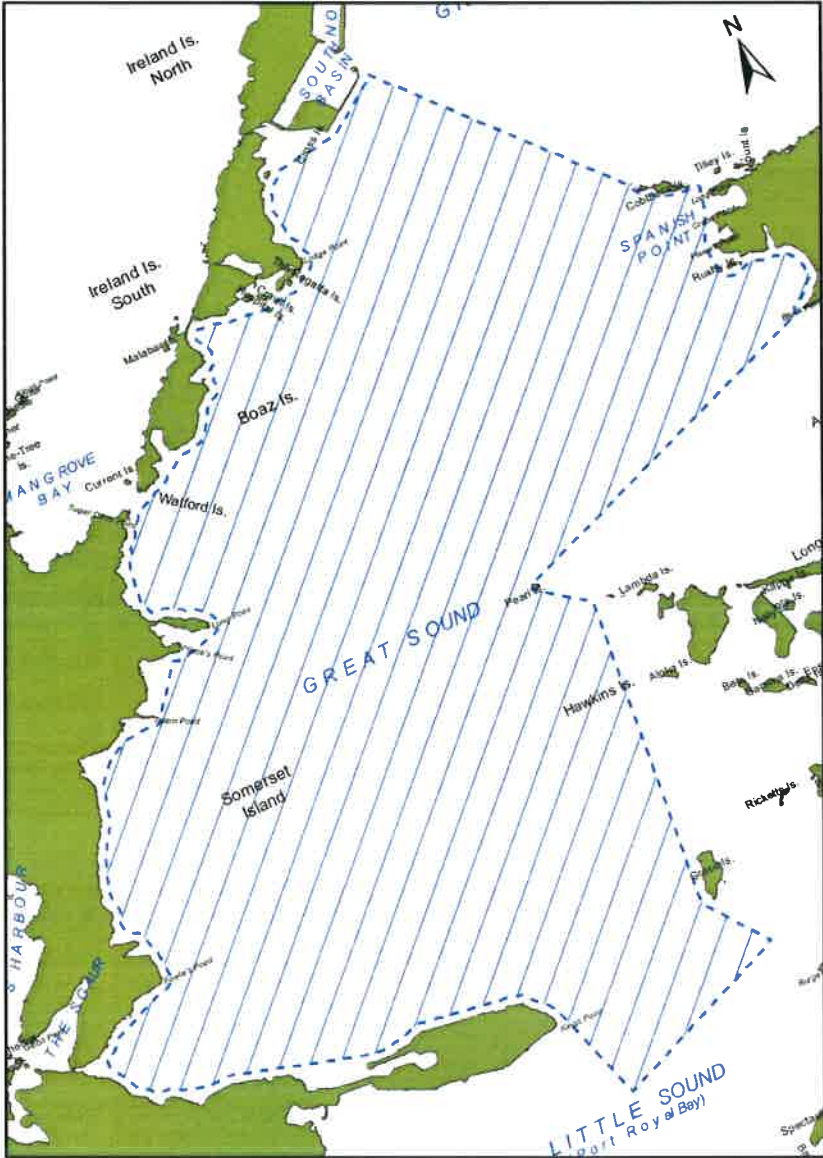
(4) Paragraph 6 does not apply to the coast guard unit providing services within the race course area.

MARINE BOARD (CONTROL OVER MARITIME TRAFFIC) (BERMUDA SAIL GRAND PRIX RACE COURSE RESTRICTIONS) NOTICE 2022

SCHEDULE

(Paragraph 2)

PLAN OF RACE COURSE AREA



**MARINE BOARD (CONTROL OVER MARITIME TRAFFIC) (BERMUDA SAIL
GRAND PRIX RACE COURSE RESTRICTIONS) NOTICE 2022**

Made this 3rd day of May 2022



Minister of Transport

